

20 December 2024

s9(2)(a)

Mālō 'e Ielēi s9(2)(a)

RESPONSE TO AN OFFICIAL INFORMATION ACT REQUEST (REF: DOIA026-2024/25)

On 6 November 2024, you contacted the Ministry for Pacific Peoples (the Ministry) requesting under the Official Information Act 1982 (OIA), information regarding the carbon neutral public service targets. I acknowledge that your request was sent to other agencies and on 26 November 2024, you agreed to provide further clarification of your request to the Ministry for the Environment. I have outlined your specific request and my response below.

1. *Is your agencies continuing to pursue the carbon neutral public service targets?*

As a Tranche 1 Government Organisation, the Ministry is part of the Carbon Neutral Government Programme and is committed to minimising our environmental footprint by reducing greenhouse gas emissions. The Ministry continues to work with Toitū Envirocare to provide support in measuring and certifying its carbon footprint. The Ministry's baseline has been reset and certified to 2022/23 as a year that more accurately reflects its organisational activities. Work has commenced to certify 2023/24 financial year.

2. *If so please provide any documents showing how this is being implemented.*

This information can be found in our Annual Reports which includes our corporate emissions reduction plans from financial year end 2021/22 onwards. I am therefore refusing this part of your request under section 18(d) of the OIA, as this information is publicly available:

- The Ministry's 2021/22 Annual Report can be found via the link below. Refer to page 62: [MPP-Annual-Report-2022-Web.pdf](#).
- The Ministry's 2022/23 Annual Report can be found via the link below. Refer to pages 66 to 67: [Ministry-of-Pacific-Peoples-Annual-Report-2022-23.pdf](#).
- The Ministry's 2023/24 Annual Report can be found via the link below. Refer to pages 128 to 129: [MPP-annual-report-year-ending-30-June-2024.pdf](#).

I have also appended to this letter copies of our certification statements issued by Toitū Envirocare for the financial year end 2020/21 to 2023/24.

3. *A list of emissions reduction initiatives implemented or planned since the first year of CNGP emissions reporting, including asset procurement and replacement, that includes the following information:*

- *A description of the initiative*
- *Any business needs that the initiative meets other than CNGP requirements*
- *The upfront cost of the initiative, broken down by year if it is multi-year expenditure, noting if it includes capital expenditure*
- *Any ongoing annual costs associate with this initiative*
- *Any cost-savings associated with this initiative, whether they are upfront or realised annually*

Further to the information held in our Annual Reports, the following is a summary of the initiatives implemented at the Ministry.

Air travel, accommodation and rental car usage

On a monthly basis, our travel management company, Orbit World Travel provides the Ministry up-to-date travel summaries to enable the Ministry to actively track its carbon emissions in alignment with its emissions reduction targets. The Ministry has also amended the travel policy to align with the guidance of the Auditor General and to enable better travel decision making.

The table below contains the Ministry’s staff travel costs for the financial year end 2021/22 to 2023/24. Cost savings from 2023/24 compared to the previous financial year was \$792,504.

Table: Staff travel costs

Financial Year	Amount (\$)
2021/22	396,936
2022/23	1,146,242
2023/24	353,738
Total	1,896,916

*Staff travel includes air travel, accommodation and rental cars

Vehicle fleet usage

Installation of global positioning system functionality in all our fleet vehicles in 2022/23. The Ministry planned specifically to purchase more environmentally friendly replacement and new vehicles by switching to electric vehicles and hybrids, if the intended use of these vehicles is appropriate. This was delayed due to two organisational structural changes in the Ministry during 2023/24; the first due to a functional realignment and the second in response to the Government’s Budget 2024 Fiscal Sustainability Programme.

The table below contains the Ministry's fleet petrol costs for the financial year end 2021/22 to 2023/24. Cost savings from 2023/24 compared to the previous financial year was \$6,169.

Table: Fleet petrol costs

Financial Year	Amount (\$)
2021/22	5,175
2022/23	14,722
2023/24	8,603
Total	28,550

4. *Total EV's brought since the targets were implemented broken down by year? Please provide notes on type of car.*

The Ministry has not purchased electrical vehicles within the last five financial years. I am therefore refusing this part of your request under 18(e) of the OIA, as the information requested does not exist.

5. *Total spent on agency emissions inventories by year since implementation. Please provide the most recent inventory.*

This information is in the Ministry's annual reports. Please refer to my response to question 2. I am refusing this part of your request under section 18(d) of the OIA, as this information is publicly available.

6. *How much is spent on voluntary carbon offsets? (Not the ETS). Please provide information on consultants for this and the total offsets.*

7. *Any considerations or actions involving Agricultural emissions.*

The Ministry is not required to offset emissions until 2025 and to date, has not purchased any offsetting. The Ministry also has no considerations or actions involving Agricultural emissions. I am therefore refusing this part of your request under 18(e) of the OIA, as the information requested does not exist.

In line with standard OIA practice, the Ministry proactively publishes some of its responses to OIA requests. As such, this letter may be published on the Ministry for Pacific Peoples' website. Your personal details will be removed, and the Ministry will not publish any information that would identify you or your organisation.

Should you wish to discuss this response with us, please feel free to contact the Ministry at: uia_requests@mpp.govt.nz.

If you are dissatisfied with this response, you have the right, under section 28(3) of the OIA, to seek an investigation and review by the Ombudsman. Information about how to make a complaint is available at www.ombudsman.parliament.nz or freephone 0800 802 602.

Mālō 'aupito

A handwritten signature in black ink, consisting of several overlapping, sweeping strokes that form a stylized, somewhat abstract shape.

Danilo Coelho de Almeida
Deputy Secretary
Corporate and Support Services



SUMMARY OF TOITŪ CARBONREDUCE CERTIFICATION

FOR MINISTRY FOR PACIFIC PEOPLES



Summary for 01 July 2020 to 30 June 2021

1
RELEASED UNDER THE OFFICIAL INFORMATION ACT 1982

TOITŪ CARBONREDUCE ORGANISATION CERTIFIED: MINISTRY FOR PACIFIC PEOPLES

Toitū carbonreduce means committing to ongoing reductions while achieving annual measurement for at least the Toitū mandatory emissions.ⁱⁱ



Measured emissions to ISO
14064-1:2018 and Toitū
requirements



Managing and reducing against
Toitū requirements

This report provides a summary of the annual greenhouse gas (GHG) emissions inventory and management report for Ministry for Pacific Peoples as part of the annual work to achieve Toitū carbonreduce certification. Additional details of the annual achievements, commitments, and verification are available on request from Ministry for Pacific Peoples.

Toitū carbonreduce organisation certified: Ministry for Pacific Peoples. Toitū carbonreduce certified means measuring emissions to ISO 14064-1:2018 and Toitū requirements; and managing and reducing against Toitū requirements.

The purpose of this report is to measure and manage our GHG emissions, which will contribute to the Carbon Neutral Government Programme.

ACHIEVEMENTS

These achievements have been verified in line with ISO 14064-3:2019 and Toitū carbonreduce Programme Technical Requirements for the 01 July 2020 to 30 June 2021 measurement period.

EMISSIONS MEASUREMENT

Ministry for Pacific Peoples's greenhouse gas emissions for this year (01 July 2020 to 30 June 2021) were 303.75 tCO₂e. Ministry for Pacific Peoples has measured the emissions resulting from its operational activities, purchased energy, and selected impacts from its value chain activities, including business travel, freight, and waste sent to landfill.

The annual inventory is detailed in the following table. Emissions and reductions are reported using a location-based methodology.ⁱⁱⁱ

Category (ISO 14064-1:2018)	Scopes (GHG Protocol)	GHG emissions (tCO ₂ e)
		Current Year 2020/2021
Category 1: Direct emissions	Scope 1	8.29
Category 2: Indirect emissions from imported energy (location-based method*)	Scope 2	13.69
Category 3: Indirect emissions from transportation	Scope 3	273.81
Category 4: Indirect emissions from products used by organisation		7.96
Category 5: Indirect emissions associated with the use of products from the organisation		0.00
Category 6: Indirect emissions from other sources		0.00
Total gross emissions*		303.75
Category 1 direct removals		0.00
Total net emissions		303.75

*Gross and net emissions are reported using a location-based methodology. Contact Ministry for Pacific Peoples for full details.

The operational GHG emission sources included in this inventory are shown in Figure 1 below.

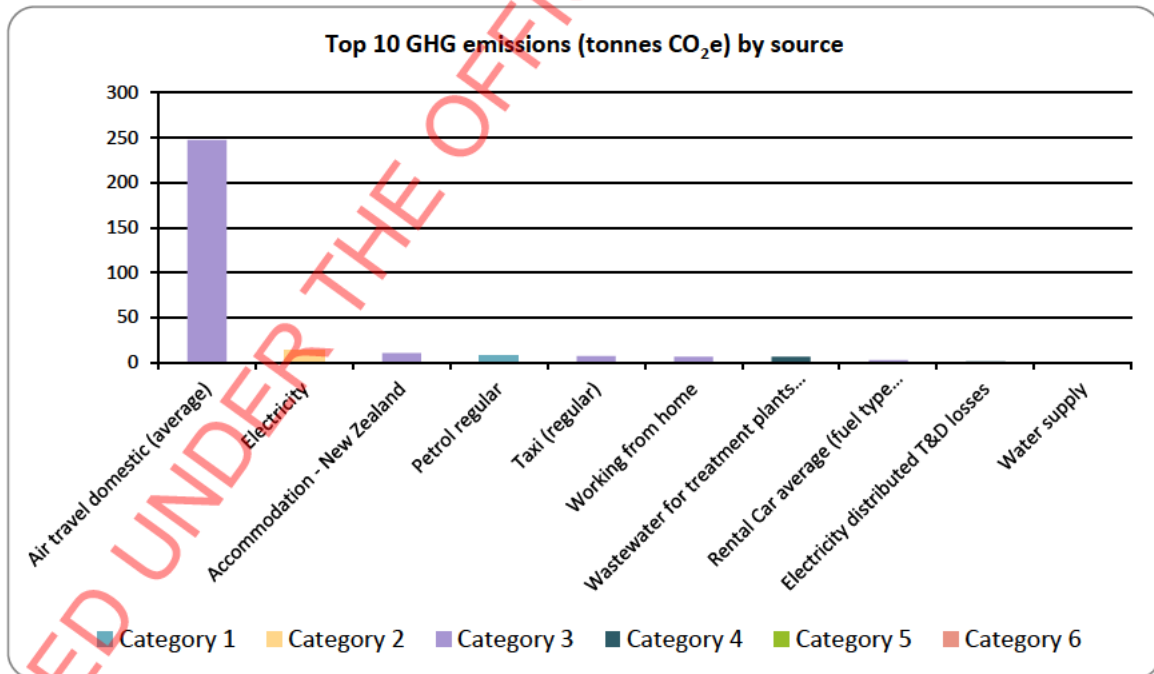


Figure 1: Top 10 GHG emissions (tonnes CO₂e) by source

SCOPE OF MEASURED INVENTORY

CONSOLIDATION APPROACH

An operational control consolidation approach was used to account for emissions. Organisational boundaries were set with reference to the methodology described in the GHG Protocol and ISO 14064-1:2018 standards.^{iv}

for FY2021, The Ministry for Pacific Peoples occupied 6 offices across New Zealand. Our National Office is based in Wellington. We are also based in Auckland, Wellington (Porirua), Christchurch, Invercargill and Palmerston North. We do not own any offices.

BOUNDARIES

The Ministry for Pacific Peoples is the Crown's principal advisor on policies and interventions aimed at improving outcomes for Pacific peoples in Aotearoa. The Ministry does not have any subsidiaries.



Figure 2: Organisational structure showing business units included and excluded

There are no excluded business units within this Inventory. Excluded emissions do not exceed 5% of the total footprint within the organisation boundary stated.

COMMITMENTS

REDUCTION TARGETS

Ministry for Pacific Peoples is committed to managing and reducing its emissions. Ministry for Pacific Peoples's commitments, including GHG emissions reduction targets and plans, have been reviewed and are in line with Toitū carbonreduce programme requirements.

Target name	Baseline period	Target date	Type of target (intensity or absolute)	Categories covered	Target	KPI	Responsibility	Rationale
A 21% decrease in overall total emissions from baseline year to 2025	FY2022/23	FY2024/25	Absolute	All Categories	21%	240 tCO _{2e}	Manager, Finance and Executive Leadership	Our targets are set in line with the minimum requirements for the CNGP, of which we believe are achievable through monthly monitoring of 90% of our emissions via Orbit reporting for Air travel, accommodation & Rental car usage.

Looking ahead, Ministry for Pacific Peoples is currently focused on the following projects.

Objective	Project	Responsibility	Completion date	Potential co-benefits	Potential unintended consequences	Actions to minimise unintended consequence
EXAMPLE: Improve efficiency for company wide Freight Sea - large container ship	Investigate options for sourcing more materials locally (therefore reducing freight distance)	Joe Seaport, Logistics Manager, OPQ Construction Limited	1/06/2021	Reduced embodied emissions Supporting local economy	None anticipated	n/a

Objective	Project	Responsibility	Completion date	Potential co-benefits	Potential unintended consequences	Actions to minimise unintended consequence
	Investigate options for reducing packaging (therefore reducing emissions through reducing weight freighted)	Joe Seaport, Logistics Manager, OPQ Construction Limited	31/12/2021	Reduced waste to landfill Reduced resource inputs	Increased product wastage if packaging is not fit for purpose	Complete a pilot testing phase prior to roll out across all product
	Investigate new transport providers that have more direct shipping routes to our desired locations (therefore reducing freight distance)	Joe Seaport, Logistics Manager, OPQ Construction Limited	Ongoing	None anticipated	None anticipated	n/a
Staff Travel - Monitoring of Carbon emissions on a monthly basis	Comparing emission reduction targets with current emissions via orbit reports	Manager, Finance	Monthly	More planning & understanding of our staff travel and commitments.	None anticipated	N/A
Staff Travel - Travel policy	Review & update travel policy	Manager, Finance	TBC	Update travel policy to be in-line with auditor general guidance	None anticipated	N/A
Fuel & Oil Usage - MV transition plan	Replacing current fleet with EV alternatives over time	Manager, Finance	Ongoing	Optimisation plan and less emissions	None anticipated	N/A

CERTIFICATE DETAILS

Certification status:	Toitū carbonreduce certified organisation
Certificate number:	2022331J, Year 2 of 3 year certificate period
Valid until:	28 November 2025
Measurement period:	01 July 2020 to 30 June 2021
Base year:	01 July 2020 to 30 June 2021
Audited by:	Toitū Envirocare
Level of assurance:	Reasonable for all mandatory categories of programme and Limited for non-mandatory

ⁱ ©Enviro-Mark Solutions Limited 2020.

Disclaimer: This Certification Summary Statement is a summary of the information (validated and verified for relevant components of the certification) considered for certification and the certification decision. It should not be taken to represent the full submission for certification. Whilst every effort has been made to ensure that the information in this Statement is accurate and complete, Enviro-Mark Solutions Limited (trading as Toitū Envirocare) does not, to the maximum extent permitted by law, give any warranty or guarantee relating to the accuracy or reliability of the information.

ⁱⁱ The mandatory sources that must be included in any Toitū carbon programme inventory include:

- All direct emissions from the activities of the organisation, or the part of the organisation being certified. Direct emissions come from assets owned or controlled by the organisation, such as emissions from fleet vehicles, boilers, generators and HVAC systems.
- All emissions from imported energy (electricity, heat and steam)
- Emissions from business travel and freight paid for by the organisation
- Emissions associated with waste disposed of by the organisation, as well as the transmission and distribution of electricity, and natural gas

ⁱⁱⁱ All purchased and generated energy emissions are dual reported using both the location-based method and market-based method in the certified Inventory Report and appendices. This summary document presents the information using the location-based method. Note that reductions and any required compensation are assessed using that method. Dual reporting illustrates the role of supplier choice, onsite renewable energy generation and contractual instruments in managing indirect emissions from energy alongside any ongoing energy efficiency and reduction efforts. This dual reporting aligns with ISO 14064-1:2018 and the GHG Protocol. Please contact this organisation for the dual reporting details applicable to this inventory.

^{iv} Control: the organisation accounts for all GHG emissions and/or removals from facilities over which it has financial or operational control. Equity share: the organisation accounts for its portion of GHG emissions and/or removals from respective facilities.

TOITŪ



ISO 14064-1
ORGANISATION

SUMMARY OF TOITŪ CARBONREDUCE
CERTIFICATION

FOR MINISTRY FOR PACIFIC PEOPLES



Summary for 01 July 2021 to 30 June 2022

RELEASED UNDER THE OFFICIAL INFORMATION ACT 1982

TOITŪ CARBONREDUCE ORGANISATION CERTIFIED: MINISTRY FOR PACIFIC PEOPLES

Toitū carbonreduce means committing to ongoing reductions while achieving annual measurement for at least the Toitū mandatory emissions.ⁱⁱ



Measured emissions to ISO
14064-1:2018 and [Toitū
requirements](#)



Managing and reducing against
[Toitū requirements](#)

This report provides a summary of the annual greenhouse gas (GHG) emissions inventory and management report for Ministry for Pacific Peoples as part of the annual work to achieve Toitū carbonreduce certification. Additional details of the annual achievements, commitments, and verification are available on request from Ministry for Pacific Peoples.

The purpose of this report is to measure and manage our GHG emissions, which will contribute to the Carbon Neutral Government Programme.

ACHIEVEMENTS

These achievements have been verified in line with ISO 14064-3:2019 and Toitū carbonreduce Programme Technical Requirements for the 01 July 2021 to 30 June 2022 measurement period.

EMISSIONS MEASUREMENT

Ministry for Pacific Peoples's greenhouse gas emissions for this year (01 July 2021 to 30 June 2022) were 85.89 tCO₂e. Ministry for Pacific Peoples has measured the emissions resulting from its operational activities, purchased energy, and selected impacts from its value chain activities, including business travel, freight, and waste sent to landfill. The annual inventory is detailed in the following table. Emissions and reductions are reported using a location-based methodology.ⁱⁱⁱ

Category (ISO 14064-1:2018)	Scopes (GHG Protocol)	GHG emissions (tCO ₂ e) Current Year 2021/2022
Category 1: Direct emissions	Scope 1	6.09
Category 2: Indirect emissions from imported energy (location-based method*)	Scope 2	10.19
Category 3: Indirect emissions from transportation	Scope 3	59.24
Category 4: Indirect emissions from products used by organisation	Scope 3	10.38
Category 5: Indirect emissions associated with the use of products from the organisation	Scope 3	0.00
Category 6: Indirect emissions from other sources	Scope 3	0.00
Total gross emissions*		85.89
Category 1 direct removals		0.00
Total net emissions		85.89

*Gross and net emissions are reported using a location-based methodology. Contact Ministry for Pacific Peoples for full details.

The operational GHG emission sources included in this inventory are shown in Figure 1 below.

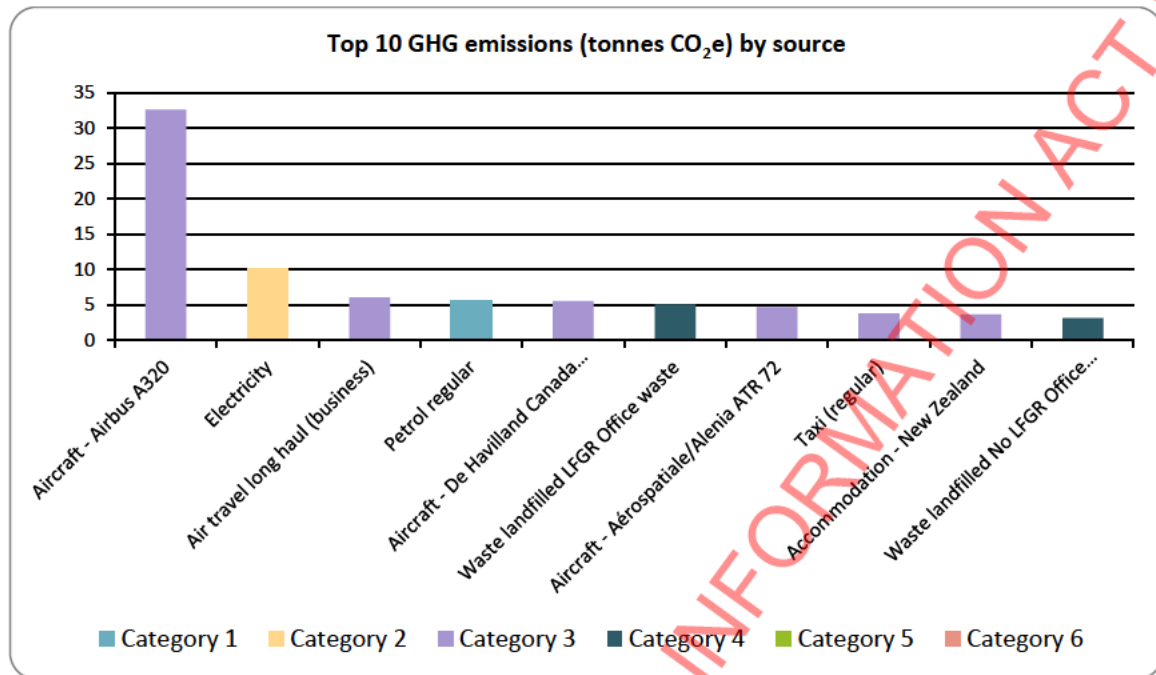


Figure 1: Top 10 GHG emissions (tonnes CO₂e) by source

SCOPE OF MEASURED INVENTORY

CONSOLIDATION APPROACH

An operational control consolidation approach was used to account for emissions. Organisational boundaries were set with reference to the methodology described in the GHG Protocol and ISO 14064-1:2018 standards.^{iv}

The Ministry for Pacific Peoples occupies 7 offices across New Zealand. Our National Office is based in Wellington. We are also based in Auckland, Hamilton, Wellington, Christchurch, Invercargill and Palmerston North. We do not own any offices.

BOUNDARIES

The Ministry for Pacific Peoples is the Crown's principal advisor on policies and interventions aimed at improving outcomes for Pacific peoples in Aotearoa. The Ministry does not have any subsidiaries.

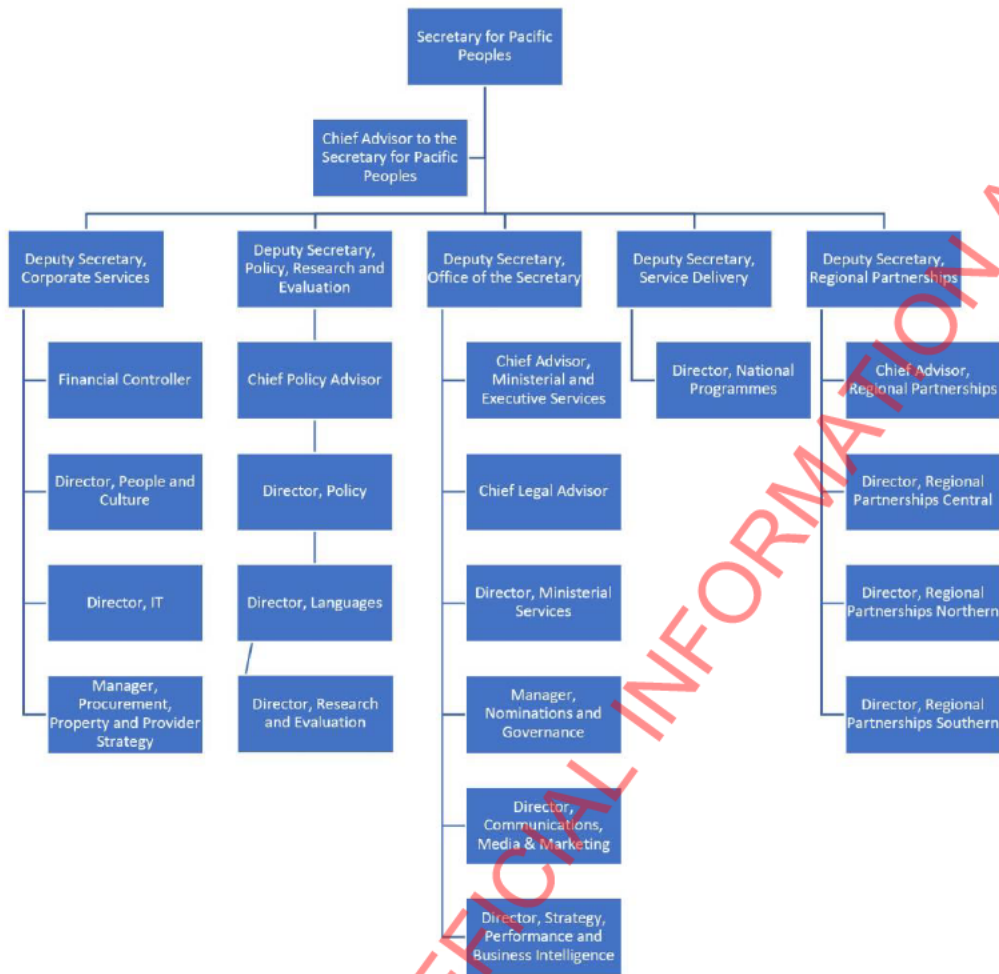


Figure 2: Organisational structure showing business units included and excluded

We have a property membership with the Ministry of Business, Innovation and Employment's Auckland Policy however we have not had anyone at MPP occupy this space since late 2021. Excluded emissions do not exceed 5% of the total footprint within the organisation boundary stated.

MANAGING AND REDUCING

This is the first year of reporting under the Toitū carbonreduce programme. No reduction in emissions was verified, as this is a base year.

COMMITMENTS

REDUCTION TARGETS

Ministry for Pacific Peoples is committed to managing and reducing its emissions. Ministry for Pacific Peoples's commitments, including GHG emissions reduction targets and plans, have been reviewed and are in line with Toitū carbonreduce programme requirements.

Ministry for Pacific Peoples commits to reduce total category 1 and 2 emissions in compliance with Toitū requirements. To do so, Ministry for Pacific Peoples will establish reduction targets, pathways and plans in the coming months to be validated at the next Toitū carbonreduce/net carbonzero verification.

Looking ahead, Ministry for Pacific Peoples is currently focused on the following projects.

Projects
(No information supplied)

CERTIFICATE DETAILS

Certification status:	Toitū carbonreduce certified organisation
Certificate number:	2022331J, Year 1 of 3-year certificate period
Valid until:	28 November 2025
Measurement period:	01 July 2021 to 30 June 2022
Base year:	01 July 2021 to 30 June 2022
Audited by:	Toitū Envirocare
Level of assurance:	Reasonable for category 1 and Limited for remaining categories

ⁱ ©Enviro-Mark Solutions Limited 2020.

Disclaimer: This Certification Summary Statement is a summary of the information (validated and verified for relevant components of the certification) considered for certification and the certification decision. It should not be taken to represent the full submission for certification. Whilst every effort has been made to ensure that the information in this Statement is accurate and complete, Enviro-Mark Solutions Limited (trading as Toitū Envirocare) does not, to the maximum extent permitted by law, give any warranty or guarantee relating to the accuracy or reliability of the information.

ⁱⁱ The mandatory sources that must be included in any Toitū carbon programme inventory include:

- All direct emissions from the activities of the organisation, or the part of the organisation being certified. Direct emissions come from assets owned or controlled by the organisation, such as emissions from fleet vehicles, boilers, generators and HVAC systems.
- All emissions from imported energy (electricity, heat and steam)
- Emissions from business travel and freight paid for by the organisation
- Emissions associated with waste disposed of by the organisation, as well as the transmission and distribution of electricity, and natural gas

ⁱⁱⁱ All purchased and generated energy emissions are dual reported using both the location-based method and market-based method in the certified Inventory Report and appendices. This summary document presents the information using the location-based method. Note that reductions and any required compensation are assessed using that method. Dual reporting illustrates the role of supplier choice, onsite renewable energy generation and contractual instruments in managing indirect emissions from energy alongside any ongoing energy efficiency and reduction efforts. This dual reporting aligns with ISO 14064-1:2018 and the GHG Protocol. Please contact this organisation for the dual reporting details applicable to this inventory

^{iv} Control: the organisation accounts for all GHG emissions and/or removals from facilities over which it has financial or operational control. Equity share: the organisation accounts for its portion of GHG emissions and/or removals from respective facilities.



SUMMARY OF TOITŪ CARBON REDUCE
CERTIFICATION

FOR MINISTRY FOR PACIFIC PEOPLES



Summary for 01 July 2022 to 30 June 2023

RELEASED UNDER THE OFFICIAL INFORMATION ACT 1982

TOITŪ CARBONREDUCE ORGANISATION CERTIFIED: MINISTRY FOR PACIFIC PEOPLES

Toitū carbonreduce means committing to ongoing reductions while achieving annual measurement for at least the Toitū mandatory emissions.ⁱⁱ



Measured emissions to ISO
14064-1:2018 and [Toitū
requirements](#)



Managing and reducing against
[Toitū requirements](#)

This report provides a summary of the annual greenhouse gas (GHG) emissions inventory and management report for Ministry for Pacific Peoples as part of the annual work to achieve Toitū carbonreduce certification. Additional details of the annual achievements, commitments, and verification are available on request from Ministry for Pacific Peoples.

Toitū carbonreduce organisation certified: Ministry for Pacific Peoples. Toitū carbonreduce certified means measuring emissions to ISO 14064-1:2018 and Toitū requirements; and managing and reducing against Toitū requirements.

The purpose of this report is to measure and manage our GHG emissions, which will contribute to the Carbon Neutral Government Programme

ACHIEVEMENTS

These achievements have been verified in line with ISO 14064-3:2019 and Toitū carbonreduce Programme Technical Requirements for the 01 July 2022 to 30 June 2023 measurement period.

EMISSIONS MEASUREMENT

Ministry for Pacific Peoples's greenhouse gas emissions for this year (01 July 2022 to 30 June 2023) were 346.41 tCO₂e. Ministry for Pacific Peoples has measured the emissions resulting from its operational activities, purchased energy, and selected impacts from its value chain activities, including business travel, freight, and waste sent to landfill.

The annual inventory is detailed in the following table. Emissions and reductions are reported using a location-based methodology.ⁱⁱⁱ

Category (ISO 14064-1:2018)	Scopes (GHG Protocol)	GHG emissions (tCO ₂ e)		
		Base Year 2020/2021	Previous Year 2021/2022	Current Year 2022/2023
Category 1: Direct emissions	Scope 1	8.29	6.09	15.26
Category 2: Indirect emissions from imported energy (location-based method*)	Scope 2	13.69	11.43	8.45
Category 3: Indirect emissions from transportation	Scope 3	273.81	59.24	311.57
Category 4: Indirect emissions from products used by organisation		7.96	10.53	11.13
Category 5: Indirect emissions associated with the use of products from the organisation		0.00	0.00	0.00
Category 6: Indirect emissions from other sources		0.00	0.00	0.00
Total gross emissions*		303.75	87.30	346.41
Category 1 direct removals		0.00	0.00	0.00
Total net emissions		303.75	87.30	346.41

*Gross and net emissions are reported using a location-based methodology. Contact Ministry for Pacific Peoples for full details.

The operational GHG emission sources included in this inventory are shown in Figure 1 below.

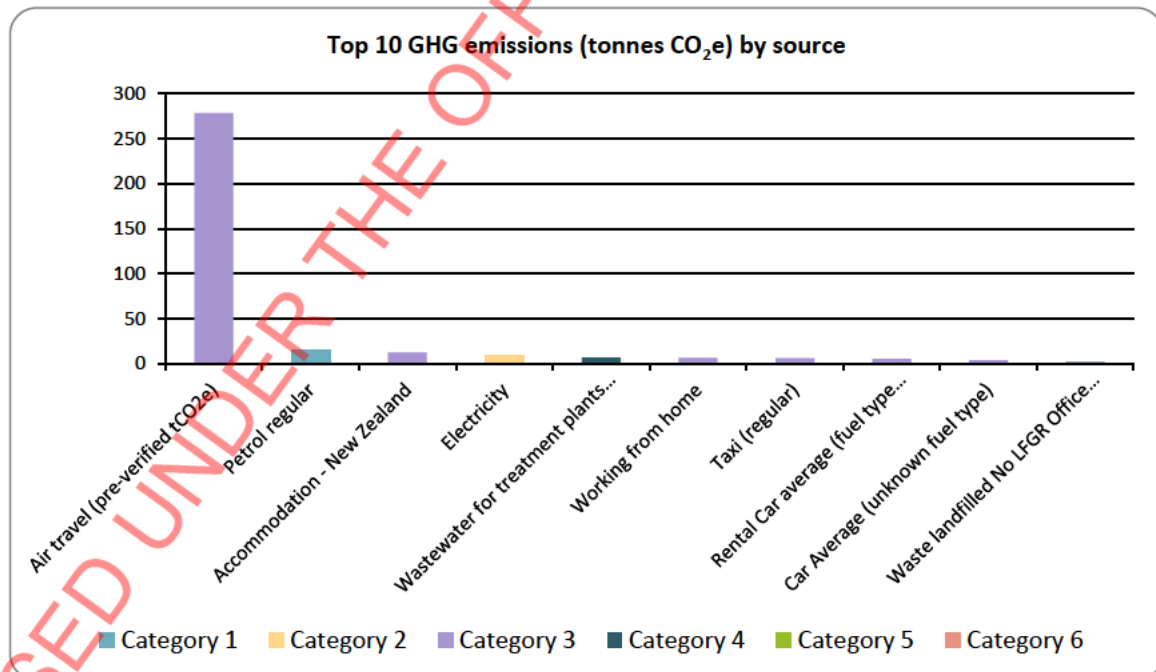


Figure 1: Top 10 GHG emissions (tonnes CO₂e) by source

SCOPE OF MEASURED INVENTORY

CONSOLIDATION APPROACH

An operational control consolidation approach was used to account for emissions. Organisational boundaries were set with reference to the methodology described in the GHG Protocol and ISO 14064-1:2018 standards.^{iv}

The Ministry for Pacific Peoples occupies 7 offices across New Zealand. Our National Office is based in Wellington. We are also based in Auckland, Hamilton, Wellington, Christchurch, Invercargill and Palmerston North. We do not own any offices.

BOUNDARIES

The Ministry for Pacific Peoples is the Crown's principal advisor on policies and interventions aimed at improving outcomes for Pacific peoples in Aotearoa. The Ministry does not have any subsidiaries.



Figure 2: Organisational structure showing business units included and excluded

There are no excluded business units within this inventory. Excluded emissions do not exceed 5% of the total footprint within the organisation boundary stated.

MANAGING AND REDUCING

This is the new base year of reporting under the Toitū carbonreduce programme and the first year since resetting their base year to 2022-23. No reduction in emissions was verified, as this is their base year.

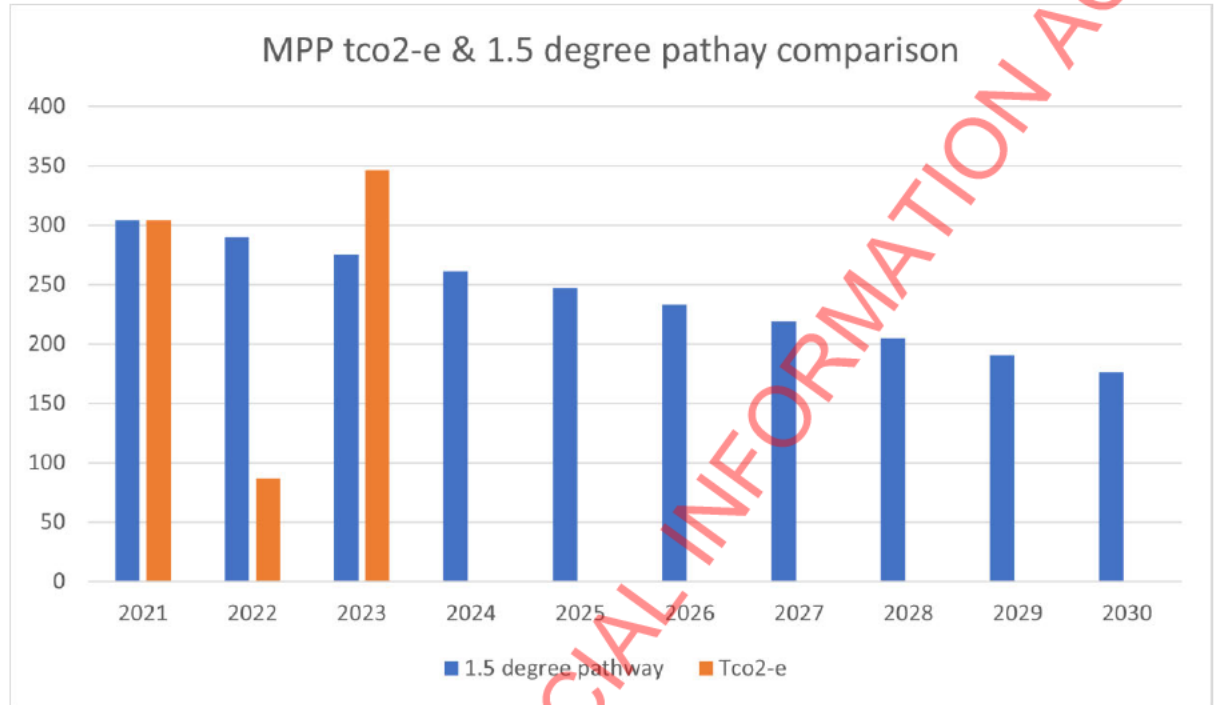


Figure 3: Performance against target since the base year

Provisional and unverified data for 2022/23 shows that we emitted 346 tonnes of carbon dioxide equivalent (tCO₂e), of which is an increase from 2021 baseline figures of 13.8%, to results for 2023.

We have already started monitoring our emissions and are tracking to come under for the FY23/24 period.

Target name	Baseline period	Target date	Type of target (intensity or absolute)	Current performance (tCO ₂ e)	Current performance (%)	Comments
A 21% decrease in overall total emissions from baseline year to 2025	FY2020/21	FY2024/25	Absolute	346 (tCO ₂ e)	13.8% Increase from baseline	Carbon Monitoring is commencing end of Q1 FY2023/24
A 42% decrease in overall total emissions from baseline year to 2030	FY2020/21	FY2029/30	Absolute	346 (tCO ₂ e)	13.8% Increase from baseline	Carbon Monitoring is commencing end of Q1 FY2023/24

COMMITMENTS

REDUCTION TARGETS

Ministry for Pacific Peoples is committed to managing and reducing its emissions. Ministry for Pacific Peoples's commitments, including GHG emissions reduction targets and plans, have been reviewed and are in line with Toitū carbonreduce programme requirements.

Our targets are set in line with the minimum requirements for the CNGP, of which we believe are achievable in doing our part to battle Climate change. The CNGP requires MPP to reduce gross emissions in line with the Paris Agreement, to limit global average temperature increases to no more than 1.5 degrees above pre-industrial levels. This means reducing our gross emissions by a minimum of 21 percent by 2025 and 42 percent by 2030, from a baseline year of 2020/21. Based on the draft 2021 tCO_{2e} data, our emissions in FY2025 need to be a maximum of 240 tCO_{2e} by 2025 & 176 tCO_{2e} by 2030.

Target name	Baseline period	Target date	Type of target (intensity or absolute)	Categories covered	Target		Responsibility	Rationale
A 21% decrease in overall total emissions from baseline year to 2025	FY2020/21	FY2024/25	Absolute	All Categories	21%	240 tCO _{2e}	Ross & Tautua	Our targets are set in line with the minimum requirements for the CNGP, of which we believe are achievable through monthly monitoring of 90% of our emissions via Orbit reporting for Air travel, accommodation & Rental car usage.
A 42% decrease in overall total emissions from baseline year to 2030	FY2020/21	FY2029/30	Absolute	All Categories	42%	176 tCO _{2e}	Ross & Tautua	Our targets are set in line with the minimum requirements for the CNGP, of which we believe are achievable through monthly monitoring of 90% of our emissions via Orbit reporting for Air travel, accommodation & Rental car usage.

Looking ahead, Ministry for Pacific Peoples is currently focused on the following projects.

Significant Source	Objective	Project	Responsibility	Completion date	Potential co-benefits	Potential unintended consequences	Actions to minimise unintended consequence
Staff Travel	Monitoring of Carbon emissions on a monthly basis	Comparing emission reduction targets with current emissions via orbit reports	Ross	Monthly	More planning & understanding of our staff travel and commitments.	None anticipated	N/A
Staff Travel	Travel policy	Review & update travel policy	Paul	TBC	Update travel policy to be in-line with auditor general guidance	None anticipated	N/A
Fuel & Oil Usage	MV transition plan	Replacing current fleet with EV alternatives over time	Ross	Ongoing	Optimisation plan and less emissions	None anticipated	N/A

CERTIFICATE DETAILS

Certification status:	Toitū carbonreduce certified organisation
Certificate number:	2022331J, Year 3 of 3 year certificate period
Valid until:	28 November 2025
Measurement period:	01 July 2022 to 30 June 2023
Base year:	01 July 2022 to 30 June 2023
Audited by:	Toitū Envirocare
Level of assurance:	Reasonable for all mandatory categories of programme and Limited for non-mandatory

ⁱ ©Enviro-Mark Solutions Limited 2020.

Disclaimer: This Certification Summary Statement is a summary of the information (validated and verified for relevant components of the certification) considered for certification and the certification decision. It should not be taken to represent the full submission for certification. Whilst every effort has been made to ensure that the information in this Statement is accurate and complete, Enviro-Mark Solutions Limited (trading as Toitū Envirocare) does not, to the maximum extent permitted by law, give any warranty or guarantee relating to the accuracy or reliability of the information.

ⁱⁱ The mandatory sources that must be included in any Toitū carbon programme inventory include:

- All direct emissions from the activities of the organisation, or the part of the organisation being certified. Direct emissions come from assets owned or controlled by the organisation, such as emissions from fleet vehicles, boilers, generators and HVAC systems.
- All emissions from imported energy (electricity, heat and steam)
- Emissions from business travel and freight paid for by the organisation
- Emissions associated with waste disposed of by the organisation, as well as the transmission and distribution of electricity, and natural gas

ⁱⁱⁱ All purchased and generated energy emissions are dual reported using both the location-based method and market-based method in the certified Inventory Report and appendices. This summary document presents the information using the location-based method. Note that reductions and any required compensation are assessed using that method. Dual reporting illustrates the role of supplier choice, onsite renewable energy generation and contractual instruments in managing indirect emissions from energy alongside any ongoing energy efficiency and reduction efforts. This dual reporting aligns with ISO 14064-1:2018 and the GHG Protocol. Please contact this organisation for the dual reporting details applicable to this inventory.

^{iv} Control: the organisation accounts for all GHG emissions and/or removals from facilities over which it has financial or operational control, Equity share: the organisation accounts for its portion of GHG emissions and/or removals from respective facilities.



STATEMENT OF TOITŪ CARBON REDUCE
CERTIFICATION ⁱ

FOR MINISTRY FOR PACIFIC PEOPLES



Statement for 01 July 2023 to 30 June 2024

RELEASED UNDER THE OFFICIAL INFORMATION ACT 1982

Toitū carbonreduce organisation certified: Ministry for Pacific Peoples

Toitū carbonreduce means committing to ongoing reductions while achieving annual requirements for at least the Toitū mandatory emissions.ⁱⁱ



Measured emissions to ISO 14064-1:2018 and [Toitū requirements](#)



Managing and reducing against [Toitū requirements](#)

This report provides a summary of the annual greenhouse gas (GHG) emissions inventory and management report for Ministry for Pacific Peoples as part of the annual work to achieve Toitū carbonreduce certification. Additional details of the annual achievements, commitments, and verification are available on request from Ministry for Pacific Peoples.

Toitū carbonreduce organisation certified: Ministry for Pacific Peoples. Toitū carbonreduce certified means measuring emissions to ISO 14064-1:2018 and Toitū requirements; and managing and reducing against Toitū requirements.

The purpose of this report is to measure and manage our GHG emissions, which will contribute to the Carbon Neutral Government Programme.

Achievements

These achievements have been verified in line with ISO 14064-3:2019 and Toitū carbonreduce Programme Technical Requirements for the 01 July 2023 to 30 June 2024 measurement period.

Emissions measurement

Ministry for Pacific Peoples's greenhouse gas emissions for this year (01 July 2023 to 30 June 2024) were 144.45 tCO₂e. Ministry for Pacific Peoples has measured the emissions resulting from its operational activities, purchased energy, and selected impacts from its value chain activities, including business travel, freight, and waste sent to landfill. The annual inventory is detailed in the following table. Emissions and reductions are reported using a location-based methodology.ⁱⁱⁱ

The data and information supporting the measurement of GHG emissions were historical in nature.

Category (ISO 14064-1:2018)	Scopes (GHG Protocol)	GHG emissions (tCO ₂ e)	
		Base Year 2022/2023	Current Year 2023/2024
Category 1: Direct emissions (tCO ₂ e)	Scope 1	15.26	7.75
Category 2: Indirect emissions from imported energy (location-based method*) (tCO ₂ e)	Scope 2	8.45	10.24
Category 3: Indirect emissions from transportation (tCO ₂ e)	Scope 3	311.57	115.30
Category 4: Indirect emissions from products used by organisation (tCO ₂ e)		11.13	11.15
Category 5: Indirect emissions associated with the use of products from the organisation (tCO ₂ e)		0.00	0.00
Category 6: Indirect emissions from other sources (tCO ₂ e)		0.00	0.00
Total gross emissions* (tCO ₂ e)		346.41	144.45
Category 1 direct removals (tCO ₂ e)		0.00	0.00
Total net emissions (tCO ₂ e)		346.41	144.45

*Gross and net emissions are reported using a location-based methodology. Contact Ministry for Pacific Peoples for full details.

The operational GHG emission sources included in this inventory are shown in Figure 1 below.

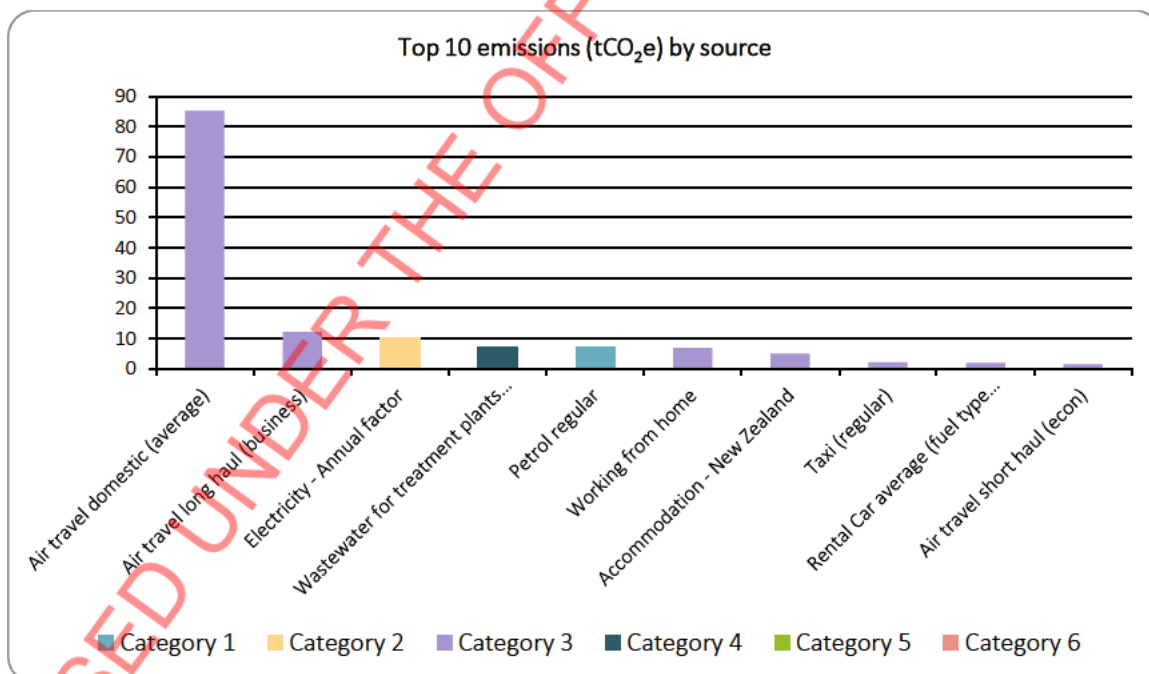


Figure 1: Top 10 GHG emissions (tonnes CO₂e) by source

Scope of Measured inventory

CONSOLIDATION APPROACH

An operational control consolidation approach was used to account for emissions. Organisational boundaries were set with reference to the methodology described in the GHG Protocol and ISO 14064-1:2018 standards.^{iv}

The Ministry for Pacific Peoples occupies 7 offices across New Zealand. Our National Office is based in Wellington. We are also based in Auckland, Hamilton, Wellington, Christchurch, Invercargill and Palmerston North. We do not own any offices.

BOUNDARIES

The Ministry for Pacific Peoples is the Crown's principal advisor on policies and interventions aimed at improving outcomes for Pacific peoples in Aotearoa. The Ministry does not have any subsidiaries.



Figure 2: Organisational structure showing business units included and excluded

There are no excluded business units within this inventory. Excluded emissions do not exceed 5% of the total footprint within the organisation boundary stated.

Managing and reducing

This is the fourth year of reporting under the Toitū carbonreduce programme and the second year since resetting their base year to 2022-23. An absolute reduction in Category 1 and 2 emissions of 5.72 tCO₂e has been achieved against base year. A reduction in emissions intensity (for Category 1, 2 and mandatory Category 3 and 4 emissions) of 2.37 tCO₂e/\$M has been achieved based upon a 2-year rolling average, adjusted for inflation.



Figure 3: Performance against target since the base year

Provisional and unverified data for 2023/24 shows that we emitted 59.2 tonnes of carbon dioxide equivalent (tCO₂e), of which is a significant decrease from our new 2022/23 baseline which was 346 tonnes.

We have already started monitoring our emissions and our unverified figures are posed to come well under for the FY23/24 period.

Target name	Baseline period	Target date	Type of target (intensity or absolute)	Current performance (tCO ₂ e)	Current performance (%)	Comments
A 21% decrease in overall total emissions from baseline year to 2025	FY2022/23	FY2024/25	Absolute	67.1 (tCO ₂ e)	- 80.61% decrease from baseline	We have exceeded this target of 21%. Massive decrease in air travel and data is more akin to year 21/22. If anything baseline was an anomaly in air travel or tco2e calculations
A 42% decrease in overall total emissions from baseline year to 2030	FY2022/23	FY2029/30	Absolute	67.1 (tCO ₂ e)	- 80.61% decrease from baseline	We have exceeded this target of 42%. Massive decrease in air travel and data is more akin to year 21/22. If anything baseline was an anomaly in air travel or tco2e calculations

Commitments

Reduction targets

Ministry for Pacific Peoples is committed to managing and reducing its emissions. Ministry for Pacific Peoples’s commitments, including GHG emissions reduction targets and plans, have been reviewed and are in line with Toitū carbonreduce programme requirements.

Our targets are set in line with the minimum requirements for the CNGP, of which we believe are achievable in doing our part to battle Climate change. The CNGP requires MPP to reduce gross emissions in line with the Paris Agreement, to limit global average temperature increases to no more than 1.5 degrees above pre-industrial levels. This means reducing our gross emissions by a minimum of 21 percent by 2025 and 42 percent by 2030, from a baseline year of 2022/23.

Target name	Baseline period	Target date	Type of target (intensity or absolute)	Categories covered	Target	Responsibility	Rationale
A 21% decrease in overall total emissions from baseline year to 2025	FY2022/23	FY2024/25	Absolute	All Categories	21% 240 tCO ₂ e	ELT	Our targets are set in line with the minimum requirements for the CNGP, of which we believe are achievable through monthly monitoring of 90% of our emissions via Orbit reporting for Air travel, accommodation & Rental car usage.
A 42% decrease in overall total emissions from baseline year to 2030	FY2022/23	FY2029/30	Absolute	All Categories	42% 176 tCO ₂ e	ELT	Our targets are set in line with the minimum requirements for the CNGP, of which we believe are achievable through monthly monitoring of 90% of our emissions via Orbit reporting for Air travel, accommodation & Rental car usage.

RELEASED UNDER THE OFFICIAL INFORMATION ACT 1982

Looking ahead, Ministry for Pacific Peoples is currently focused on the following projects.

Significant Source	Objective	Project	Responsibility	Completion date	Potential co-benefits	Potential unintended consequences	Actions to minimise unintended consequence
Staff Travel	Monitoring of Carbon emissions on a monthly basis	Comparing emission reduction targets with current emissions via orbit reports	Project Manager - finance	Quarterly	More planning & understanding of our staff travel and commitments.	None anticipated	Leveraging Orbit reporting
Staff Travel	Travel policy	Review & update travel policy	Director of Finance	Quarterly	Update travel policy to be in-line with auditor general guidance	None anticipated	Leveraging Orbit reporting to communicate travel necessity and output
Fuel & Oil Usage	MV transition plan	Replacing current fleet with EV alternatives over time	Executive Leadership Team	Ongoing, expect complete by FY26	Optimisation plan and less emissions	Increased electricity use by switching to EV	Exploring energy providers

RELEASED UNDER THE OFFICIAL INFORMATION ACT 1982

Certificate details

CERTIFICATION STATUS:	Toitū carbonreduce certified organisation
CERTIFICATE NUMBER:	2024351J, Year 1 of 3 year certificate period ^v
ISSUED:	4 November 2024
VALID UNTIL:	4 November 2027
MEASUREMENT PERIOD:	01 July 2023 to 30 June 2024
BASE YEAR:	01 July 2022 to 30 June 2023
AUDITED BY:	Toitū Envirocare
ASSURED BY:	Toitū Envirocare
CERTIFIED BY:	Toitū Envirocare
LEVEL OF ASSURANCE:	Reasonable for all mandatory scopes of programme and Limited for non-mandatory scopes

ⁱ ©Enviro-Mark Solutions Limited 2020.

Disclaimer: This Certification Summary Statement is a summary of the information (validated and verified for relevant components of the certification) considered for certification and the certification decision. It should not be taken to represent the full submission for certification. Whilst every effort has been made to ensure that the information in this Statement is accurate and complete, Enviro-Mark Solutions Limited (trading as Toitū Envirocare) does not, to the maximum extent permitted by law, give any warranty or guarantee relating to the accuracy or reliability of the information.

Enviro-Mark Solutions Limited (trading as Toitū Envirocare) head office located at Level 11, 11 Britomart Place, Auckland 1010, New Zealand is a third-party validation / verification body.

ⁱⁱ The mandatory sources that must be included in any Toitū carbon programme inventory include:

- All direct emissions from the activities of the organisation, or the part of the organisation being certified. Direct emissions come from assets owned or controlled by the organisation, such as emissions from fleet vehicles, boilers, generators and HVAC systems.
- All emissions from imported energy (electricity, heat and steam)
- Emissions from business travel and freight paid for by the organisation
- Emissions associated with waste disposed of by the organisation, as well as the transmission and distribution of electricity, and natural gas

ⁱⁱⁱ All purchased and generated energy emissions are dual reported using both the location-based method and market-based method in the certified Inventory Report and appendices. This summary document presents the information using the location-based method. Note that reductions and any required compensation are assessed using that method. Dual reporting illustrates the role of supplier choice, onsite renewable energy generation and contractual instruments in managing indirect emissions from energy alongside any ongoing energy efficiency and reduction efforts. This dual reporting aligns with ISO 14064-1:2018 and the GHG Protocol. Please contact this organisation for the dual reporting details applicable to this inventory.

^{iv} Control: the organisation accounts for all GHG emissions and/or removals from facilities over which it has financial or operational control. Equity share: the organisation accounts for its portion of GHG emissions and/or removals from respective facilities.

^v In year 1 (recertification year) of the certificate validity period, this certification summary statement also serves as the verification/validation statement required by paragraph 9.7 of ISO 17029:2019. In year 2 or 3 (surveillance year) this certification summary statement serves only as a summary of the results of the verification/validation of the GHG Statement.

RELEASED UNDER THE OFFICIAL INFORMATION ACT 1982